

# Field Installation of “Pulsar® 3 Enhancement Kit”

**Note: The ESV and Discharge valve floats have been removed in these pictures for a better view of these procedures. It is not required to remove any floats for this installation.**

Rinse out residue from Pulsar 3 feeder body using water and the “Clean-out Port”

Remove tubing leading to and from the parker fittings on the ESV, remove parker fitting from ESV inlet, unscrew ESV mounting screws (figure 1) and remove ESV from feeder body.

Remove parker elbow fitting from top of ESV valve (figure 2). *It will not be reused.*

Install tee with two parker fittings into top port of ESV (figure 3).

Tighten until snug with the elbow facing down on left as shown in figure 4. *Don't over-tighten.*



Figure 1



Figure 2



Figure 3



Figure 4

Remove tubing, parker fitting and discharge valve-mounting nut (figure 5).

Remove discharge valve from feeder body (figure 6).

Use two mounting screws and washers to secure enhancement bracket to discharge valve (figure 7).  
Make sure nozzles are aligned properly as shown in figure 12.

Install discharge valve back on the feeder body (figure 8) and install mounting nut (figure 5).



Figure 5



Figure 6



Figure 7



Figure 8

Replace parker fitting and discharge tubing to discharge valve.

Connect tubing (13.5” long) from enhancement kit to tubing connector facing down off ESV (figure 10).

Connect tubing from ESV to parker fitting on enhancement kit bracket (figure 11).

Make sure nozzles are aligned properly and nozzle pointing toward middle of base is angled down slightly to spray the middle bottom of the discharge tank floor as shown in figure 12.



Figure 9



Figure 10



Figure 11



Figure 12

**Note: Drilling holes into the feeder body is done at the dealers' risk.**

1. Mark drill points for two 5/8" holes by performing the following measurements: Make a mark on the feeder directly above the ESV as shown in figure 13. Align the mark on the feeder with the ruler at 7 1/2" as shown in figure 14. Role ruler around perimeter of the feeder body and make a mark on the feeder at the end of the ruler as shown in figure 15.



Figure 13

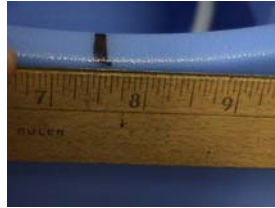


Figure 14



Figure 15

Measure 6" down from the mark made in figure 15 and mark the drill point (figure 16).

Go back to mark made in figure 15 and align mark with the ruler at 7 1/2" as shown in figure 14.

Role ruler around perimeter of the feeder body and make a mark on the feeder at the end of the ruler as shown in figure 17.

Measure 6" down from the mark made in figure 17 and mark the second drill point (figure 17).

Drill two 5/8" holes where marked on feeder body as shown in figure 18.



Figure 16



Figure 17



Figure 18

Install the grommets as shown in figure 19.

Pass 20ft of 3/8" tubing through the grommet on the right and connect to the Parker fitting on the ESV as shown in figure 9. Pass other end of tubing through grommet on the left and through hole near deflection plate and connect to Parker fitting on spray tree as shown in Figure 21.

Install ESV to body with 4 screws (figure 1), install parker fitting in ESV and connect tubing.



Figure 19



Figure 20



Figure 21

Next, follow "Solenoid Installation Instructions" provided with this kit for both 120V and 24V.

The electrical supply cords will differ for 24 and 120 volt solenoids but installation is the same.

